

Data for Mapping

These datasets are freely available to University of Edinburgh staff and students. For assistance in obtaining or using them please contact the Data Library: datalib@ed.ac.uk. Further information about Data Library services is available at <http://www.ed.ac.uk/is/data-library>.

EDINA Mapping Services

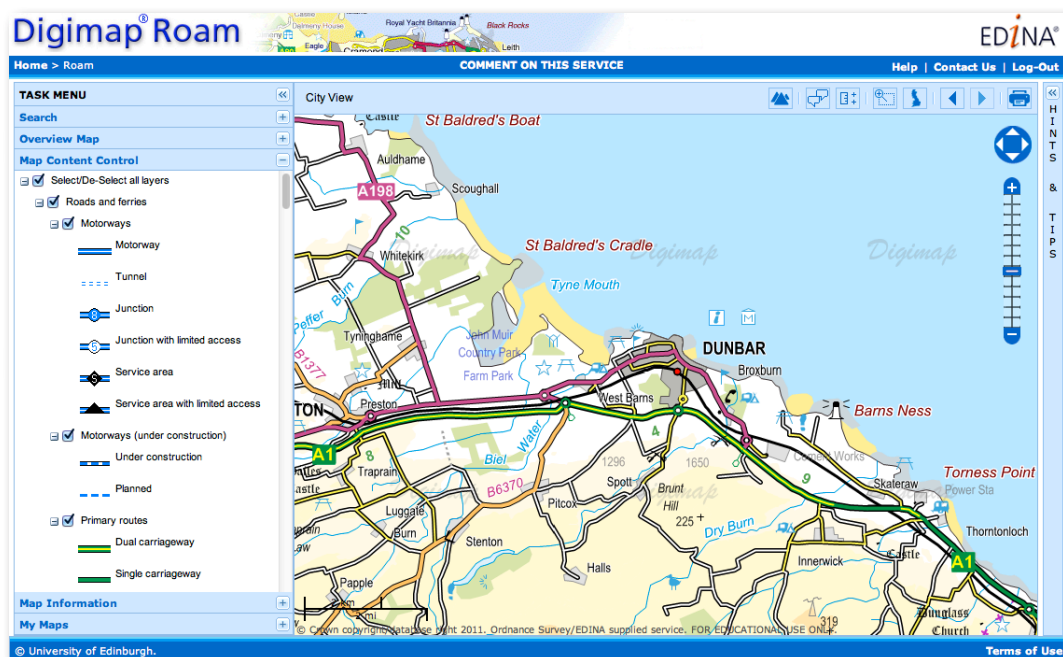
EDINA is a JISC-funded national data centre which provides access to key geographic data, especially for the UK, such as digital maps and digital boundaries. These services can be used in a wide variety of disciplines. IS subscribes to the following EDINA services:

EDINA Digimap Collection edina.ac.uk/digimap

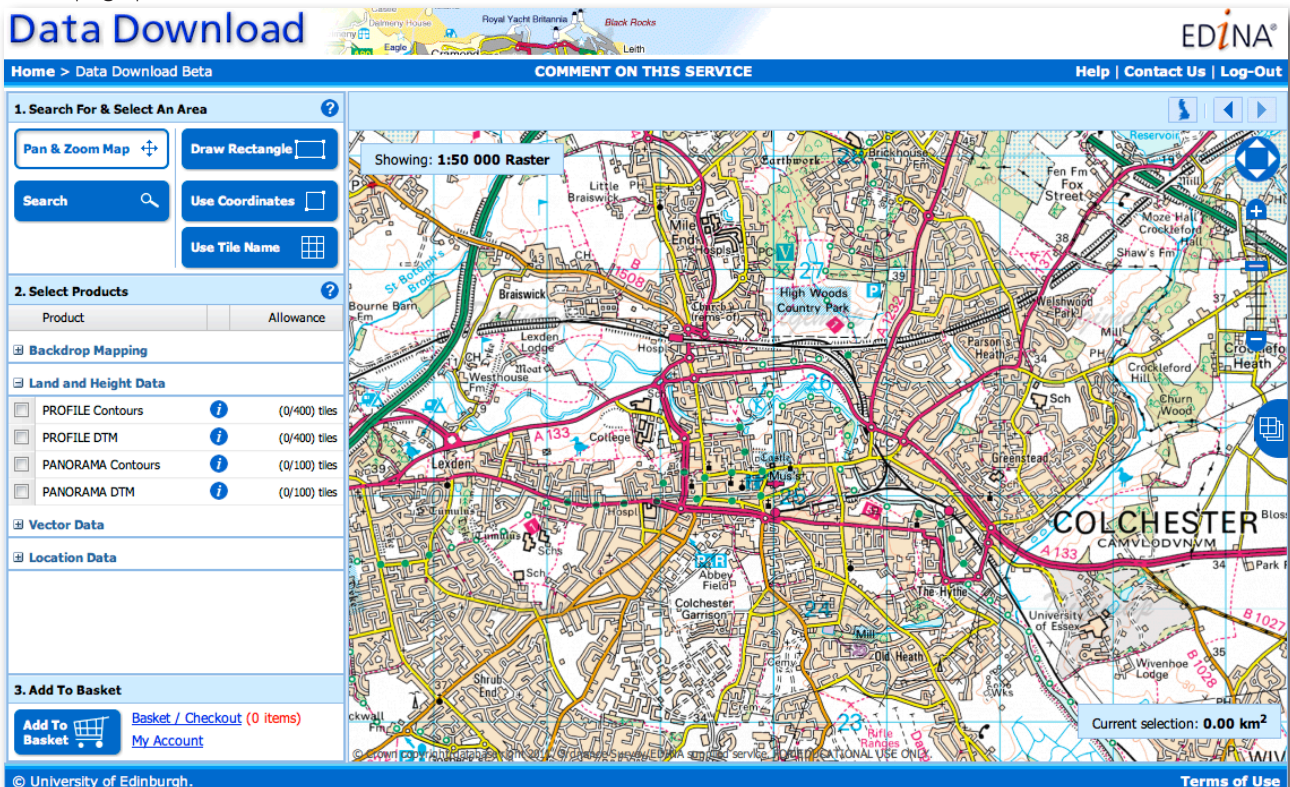
Digimap is a collection of EDINA services that deliver maps and map data of Great Britain to UK tertiary education. Data is available either to download to use with appropriate application software such as GIS or CAD, or as maps generated by Digimap online.

Digimap - Ordnance Survey Collection

- *Roam* allows users to create maps at one of 12 different pre-defined scales. Each map view uses different scale Ordnance Survey data for the appropriate view chosen. The map can be viewed on screen, or printed at A3 or A4 size directly from Digimap as a GIF file, or by downloading a postscript file (EPS) for local printing if higher graphic quality is required. Some views allow feature customisation.



- *Carto* provides advanced facilities for customised map creation and printing including: selecting a map location either by place name, reference map, map sheet or Easting and Northing co-ordinates; combining two or more map products on the same map; specifying the scale of a map; printing at a range of output sizes (A4 to A0).
- *Postcode Query* allows searching using a specific postcode to view its area and related attributes.
- *Gazeteer Query* allows simple searching from the Ordnance Survey's 1:50,000 Scale Gazeteer for a place name to find its location whereas *Gazeteer Plus* allows advanced searching from the Ordnance Survey's 1:50,000 Scale Gazeteer for place names by location or attributes. It also allows download of selected records in a range of formats.
- *Digimap Download* is an easy-to-use facility which allows you to obtain spatial data in a variety of formats for selected tiles from a number of mapping products in addition to MasterMap, Integrated Transport Network (ITN) and topographic data.



- *Boundary Download* is a facility for downloading postcode and other boundary data.
- *Gazetteer Download* is a 1:50,000 Scale Gazeteer that can be downloaded as a whole file for each year since 1999, in three formats: plain text (.CSV), ZIP and GZIP.

For further information about registration, site representative details and IS Skills Digimap/GIS Training courses point your browser to <http://edina.ac.uk/digimap/access/register.html>. ESRI Virtual Campus courses (self-paced web courses in GIS software from ESRI – <http://training.esri.com/gateway>) are also freely available to University of Edinburgh staff and students. To register for one of these free courses, email a request to Software Services: software.services@ed.ac.uk.

Ancient Roam - historic maps from Landmark

Historic Digimap offers historic Ordnance Survey maps of Great Britain to UK Higher and Further Education. These have been generated by Landmark Information Group. The collection includes the following maps:

- all available Country Series maps at 1:2,500 and 1:10,560 scales published between 1843 and 1939.
- all available National Grid maps 1:1,250, 1:2,500 and 1:10,560/10,000 scales published from 1945 and before the introduction of the OS digital Land-Line product.

Ancient Roam allows you to print maps and download them as geo-referenced raster images for use in GIS or image processing software. The facility also allows you to view up to two maps simultaneously, enabling you to see real change

over time. Available to registered users via EDINA Digimap Service for viewing and downloading in a variety of GIS formats.

Geology Digimap – geological maps and data from the British Geological Survey

Geology Digimap delivers geological maps and data from the British Geological Survey (BGS). Geology maps and data are available at scales of 1:50,000, 1:250,000 and 1:625,000.

Geology Digimap enables users to view maps through a web browser using Geology Roam to save maps for printing and download the geological map data for use in a GIS.

UKBORDERS

edina.ac.uk/ukborders

UKBORDERS provides access to digital boundary data such as electoral and postcode band areas from 1840 to the present. Digital boundary data forms the basis for making thematic maps in which Census or other statistical data are shown through a colour spectrum (choropleth mapping) or points representing locations are added to a base map.

Available to registered users via EDINA for downloading only, in a variety of GIS formats.

Agricultural Census Data for Great Britain

edina.ac.uk/agcensus

Agricultural census data aggregated at 2km, 5km and 10km gridded square areas provide information on the distribution and extent of crop production, rearing of livestock, and nature of farms. It can also be used to give an indication on the regional change in agricultural activity over time.

Available to download as plain text (.csv) and KML (Keyhole Markup Language) or visualize over the Web via EDINA (registration required).

Other Digital Map Data available from the Data Library

Generalized Geological Map of the World and Linked Databases – Geological Survey of Canada

The Generalized Geological Map of the World contains three basic digital datasets: the raw components of a generalized geological map of the world; mineral deposit sites; and associated descriptive data to be viewed against the geological backdrop. The fourth component of the CD-ROM is an enhanced version of SurView, a viewing utility packaged with these three datasets in proprietary format.

GEBCO (General Bathymetric Chart of the Oceans) Digital Atlas

The GEBCO Digital Atlas resulted from an international project run jointly by the IOC (Intergovernmental Oceanographic Commission) and the IHO (International Hydrographic Organization). The Atlas comprises the GEBCO_08 global bathymetric grid at 30 arc-second intervals, the GEBCO One Minute Grid global bathymetric grid, a global set of digital bathymetric contours and coastlines, the GEBCO gazetteer of undersea feature names and a software interface for viewing and accessing the datasets.

Landmap (Mimas)

landmap.mimas.ac.uk/landmap

The Landmap collection provides orthorectified satellite image mosaics of Landsat 4; Landsat 5; Landsat 7; SPOT, ENVISAT; European Remote Sensing radar data; Shuttle Radar Topography Mission data; Kinematic Global Positioning System data and a 25m Digital Elevation Model for the British Isles. The data is in a form which can easily be merged with other data, such as Ordnance Survey data, enabling users to quickly produce a precise map of their area of interest.

The data can be used for a wide range of applications such as geomorphology; glaciology; vegetation mapping and subsidence mapping. For further information including registration email: datalib@ed.ac.uk.

National Statistics 2001 Area Classification of Output Areas (ONS – Office for National Statistics)
www.ons.gov.uk/ons/guide-method/census/census-2001/news-archive/2004-2006/uk-census-based-classification-of-output-areas/index.html

The 2001 Area Classification is used to group together geographic areas according to key demographic characteristics. The groupings, called clusters are derived using Census data and are available in MS-Excel format on CD from the Data Library.

Neighbourhood Statistics (ONS – Office for National Statistics)
www.neighbourhood.statistics.gov.uk

Neighbourhood Statistics is a free web-based service which provides small area statistics for the following topics. Access to services; Community well-being; Social Environment; Crime and safety; Economic deprivation; Education, skills and training; Health and care; Housing; Indices of deprivation; People and society; Physical environment; Work deprivation. Data are currently available for a number of geographies including super output areas, wards, local authorities, and health board area.

Scottish Neighbourhood Statistics (Scottish Government)
www.sns.gov.uk

Scottish Neighbourhood Statistics (SNS) provides access to a range of small area statistics including information on health, education, poverty, unemployment, housing, population, crime and social/community issues at the data zone level and above. In addition to reporting tools, geographic lookups, interactive mapping, names, boundaries (Shapefiles) and data (XML or CSV) can be downloaded along with the most recent indicators.

Scottish Index of Multiple Deprivation (SIMD) (Scottish Government)
www.scotland.gov.uk/Topics/Statistics/SIMD

The SIMD provides access to a range of deprivation indicators in seven domains. Current Income, Employment, Health, Education Skills and Training, Geographic Access to Services (including public transport travel times for the first time), Housing and Crime. The result is a comprehensive picture of relative area deprivation across Scotland. The SIMD Interactive Mapping also allows users to identify the range of deprivation data available across the 6,505 data zones.

National Statistics Postcode Director (NSPD) (ONS – Office for National Statistics)
www.ons.gov.uk/ons/guide-method/geography/products/postcode-directories/-nspd-/index.html

A lookup table in which every postcode in Great Britain is assigned a national grid reference and matched to administrative, electoral, and Census zones. Updated quarterly.

Available from UKBORDERS to registered Census data users.

Resource Discovery Portals

GoGeo (EDINA)
www.gogeo.ac.uk

GoGeo is a geospatial resource discovery tool for locating geographic data and related resources created by GB tertiary education. Resource channels include Case Studies; Data Format Guides, information on Major Data Providers, Geoterminology, GIS Software including Data Translators and Freeware. There are also links to GIS-related research and learning materials, subject resources and training course.

UK Location Discovery Metadata Service
location.defra.gov.uk/resources/discovery-metadata-service

Under development to create INSPIRE compliant data catalogue.