

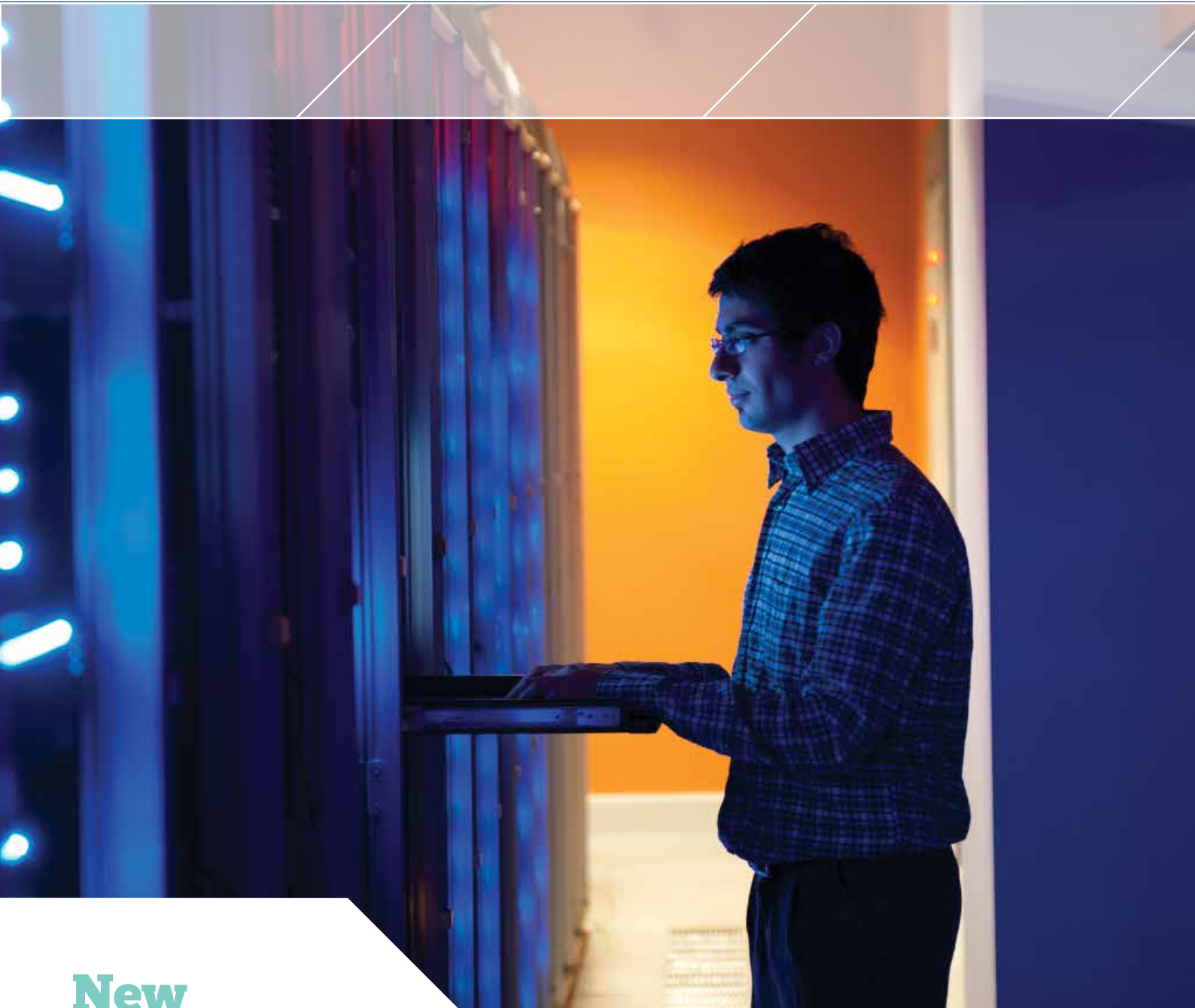


# BITS

MAGAZINE

Issue 8, Autumn/Winter 2013

Sharing news and stories across Information Services and the University



**New  
Research  
Data Storage**

- page 2

**Enhancing  
the student  
experience**

- page 5

**Success  
for Library  
projects**

- page 7

**60 second  
interview**

- page 13

**Editor:**  
Dawn Ellis

**Editorial team:**  
Andrew Bevan, Kevin Brogan, Lorna Brown,  
Lizzie Cass-Maran, Lucy Janes, Helen Murphie,  
Nicola Osborne, Garry Scobie, Sonia Virdi, Susan  
Watson, Ailsa Wilson, Rachel Xie

**Design and production:**  
The Multimedia Team, IS  
[www.ed.ac.uk/is/design](http://www.ed.ac.uk/is/design)

**Published by:**  
Information Services, The University of Edinburgh

**Contributions, contact and distribution queries:**  
Email: [BITS@ed.ac.uk](mailto:BITS@ed.ac.uk)

**BITS on the Web:** [www.ed.ac.uk/is/bits](http://www.ed.ac.uk/is/bits)

**Printed by:** J Thomson Colour Printers

If you require this publication in an alternative format, please contact Viki Galt, Disability Information Officer on 0131 650 6645 or email [viki.galt@ed.ac.uk](mailto:viki.galt@ed.ac.uk)

#### SUBMISSION DETAILS

If you would like to submit an article, or tell us about some news, please email: [BITS@ed.ac.uk](mailto:BITS@ed.ac.uk)

The deadline for submissions for the next issue of **BITS** is **Friday 7 February 2014**.

To keep up to date with IS news:  
[www.ed.ac.uk/is/news](http://www.ed.ac.uk/is/news)

FSC LOGO

## Editorial

Awards, cabaret, art in the asylum, chocolate buttons...this issue of **BITS** has it all!

As we near the end of 2013 it's a good time to reflect on our achievements over the past year. Page 7 takes a look at the successful completion of two projects at Edinburgh College of Art Library which we hope will make our collections more accessible and easier to navigate for users. Meanwhile, the University's breadth of involvement and success during the various Edinburgh festivals this year is the focus of page 9.

We're also busy planning for the future. The annual planning round to determine the central IT developments for 2014-17 is well underway (page 1) and preparations for the roll-out of Office 365 to staff currently using Exseed is gathering pace (page 4).

We've listened to the demand for secure, backed up, networked storage for research productivity and are delighted to now be underway with the roll-out of our new Research Data Storage service. Turn to pages 2 and 3 to find out more about this service and what you can expect from it.

The growth of social media shows no signs of slowing down, and in response to staff in the University beginning to use social media for their teaching activities you can find out on page 10 all about the new service we've launched to help support staff and students in using social and cloud based tools in their learning and teaching activities.

If there's something you'd like to read about in a future issue of **BITS**, or have an article to contribute, please get in touch with one of our Contributing Editors. Happy reading.

**Susan Watson**  
Divisional Administrator, IS User Services Division

## News highlights

### University website wins web award

The work of approximately 800 editors who publish the University of Edinburgh's website has been recognised in the award of a 2013 Standard of Excellence WebAward.

Presented by the Web Marketing Association, the judges select award-winners based on the quality of the design, interactivity, technology, content, innovation, copywriting and ease of use to target audience in the website.

Dawn Ellis, Director of the University Website Programme (UWP), said: "This award is a tribute to the hard work of the hundreds of editors across the University who work together to create the best possible user experience."

The UWP works in close cooperation with Schools and departments throughout the University, and the new design was developed and implemented in collaboration with colleagues in Communications and Marketing and Information Services.

<http://bit.ly/18VLVor>



Dawn Ellis

**This award is a tribute to the hard work of the hundreds of editors across the University who work together to create the best possible user experience.**

### Acting Head of Collections Development and Management

Helen Murphie



Laura Macpherson has been appointed as Acting Head of Collections Development and Management in Library and University Collections (L&UC).

"In my time as Acting Head, I hope to enhance the reshaping in L&UC by bringing the teams closer together across the Division, working with colleagues in Research & Learning, Museums, and Special Collections. We have a strong relationship with our Liaison and Help Services colleagues in User Services Division, which goes from strength to strength in this new arrangement."

"I will also be supporting the fantastic initiatives the teams are undertaking in providing collections in new ways such as evidence-based purchasing (where we provide access to electronic content and buy when used), the Request a Book (RAB) on-demand purchasing scheme, and free inter-library loans. We will also be making workflow improvements in this period, to ensure the time between acquisition/subscription and availability is decreased, and that our resource discovery systems have the correct standard of metadata to make finding material easy."

### Planning for 2014-17 IS Applications Annual Planning

Kevin Brogan

For a number of years IS Applications Division has run an annual process to determine the central IT systems developments needed for future years. Although this process has included projects which span multiple years, it has largely focused on requirements for the upcoming year.

This year the planning process is being aligned with the University's updated three year planning cycle. The process is rolling so that when the end of year one is reached, we will take stock and plan for the subsequent three years, using what were years two and three as our starting point.

Planning for the first three year cycle 2014-17 is now underway.

<https://www.projects.ed.ac.uk/planning/area/apps>

# New Research Data Storage

John Scally, Stuart Lewis, Tony Weir, Robin Rice, Cuna Ekmekcioglu



**Information Services is very pleased to announce that our new Research Data Storage hardware has been safely delivered.**

Following a competitive procurement process, a range of suppliers were selected to provide the various parts of the infrastructure, including Dell, NetApp, Brocade and Cisco. The bulk of the order was assembled over the summer in China and shipped to the King's Buildings campus at the end of August. Since then IT Infrastructure staff have been installing, testing and preparing the storage for roll-out.



## How good is the storage?

Information Services recognises the importance of the University's research data and has procured enterprise-class storage infrastructure to underpin the programme of Research Data services. The infrastructure ranges from the highest class of flash-storage (delivering 375,000 IO operations per second) to 1.6PB (1 Petabyte = 1,024 Terabytes) of bulk storage arrays. The data in the Research Data Management (RDM) file-store is automatically replicated to an off-site disaster facility and also backed up with a 60-day retention period, with 10 days of file history visible online.

## How much free allocation will I receive?

The University has committed 0.5TB (500GB) of high quality storage with guaranteed backup and resilience to every active researcher. The important principle at work is that the 0.5TB is for the individual researcher to use primarily to store their active research data. This ensures that they can work in a high quality and resilient environment and, hopefully, move valuable data from potentially unstable local drives. Research groups and Schools will be encouraged to pool their allocations in order to facilitate shared data management and collaboration. This formula was developed in close consultation with College and School representatives; however, there will be discipline differences in how much storage is required and individual need will not be uniform. A degree of flexibility will be built into the allocation model and roll-out, though if researchers go over their 0.5TB free allocation they will have to pay.

## Why is the University doing this?

The storage roll-out is one component of a suite of existing and planned services known as our Research Data Management Initiative. An awareness raising campaign accompanies the storage allocation to Schools, units and individuals to encourage best practice in research data management planning and sharing.

Research Data Management support services:  
[www.ed.ac.uk/is/data-management](http://www.ed.ac.uk/is/data-management)

The University's Research Data Management Policy:  
[www.ed.ac.uk/is/research-data-policy](http://www.ed.ac.uk/is/research-data-policy)

To learn more about this cross-IS initiative follow the Edinburgh Data Blog: <http://datablog.is.ed.ac.uk>

## Who qualifies for an allocation?

Every active researcher in the University! This is an agreement between the University and the researcher to provide quality active data storage, service support and long term curation for researchers. This is for all researchers, not just Principal Investigators or those in receipt of external grants to fund research.

## When do I get my allocation?

We are planning to roll out to early adopter Schools and institutes late November this year. This is dependent on all of the quality checks and performance testing on the system being completed successfully, however, confidence is high that the deadline will be met.

The early adopters for the initial service roll-out are: School of GeoSciences, School of Philosophy, Psychology and Language Sciences, and the Centre for Population Health Sciences. Phased roll-out to all areas of the University will follow.

**“** John Scally

The arrival of the RDM storage and its imminent roll out is an exciting step in the development of our new set of services under the Research Data Management banner. Ensuring that the service we deploy is fair, useful and transparent are key principles for the IS team.

**”**



IT focus

## The Open Access Implementation Project

**Dominic Tate**

The Open Access Implementation Project is being led by the Scholarly Communications Team in Library & University Collections to substantially increase the volume of 'Green' open access papers available in PURE and made available for free through the Research Explorer.

Instigated by Research Councils UK, using funds allocated by the Department of Business, Innovation and Skills (BIS), the project comprises 17 staff based in Colleges and Schools and is led by Theo Andrew supported by Michael Bryce. Staff are sourcing suitable open access material in existing repositories and academics are working with staff within their units for post-prints suitable for uploading to PURE.

The project will run until December 2013 and Research Councils UK will carry out a review of policy implementation in 2014.

<http://edin.ac/10cbi2w>

## Gold Open Access

**Theo Andrew**

Some Open Access Journals make their articles available for free through charging for the publication services before publication, rather than after publication through subscriptions. Research Funders consider this part of the cost of research, so the money for access comes through the research funder, rather than through the library budget.

Since receiving final confirmation in July 2013 to administer the £830,550 Open Access block grant received from Research Councils UK, the Scholarly Communications Team has set up a full support service to help researchers administer their Gold Open Access payments.

To make the block grant extend further the Scholarly Communications Team has also evaluated and signed up to a number of publisher Open Access discount and pre-payment schemes.

<http://edin.ac/13yAfvx>

## Office 365 for staff

**Stuart McFarlane**

Following our students move to Office 365 earlier this year, the Exseed email and diary service for staff is being migrated to the Microsoft Office 365 for Education service.

Planning for the migration of mailboxes has started, with testing and pilot migrations underway. Consultation with Schools and departments will follow to plan a migration schedule that ensures minimal disruption to users. We would envisage all Exseed mailboxes moving to Office 365 by the end of March 2014.

In addition to email and calendars, Office 365 will make new cloud services available:

- SkyDrive Pro file storage (25Gb);
- Lync Online with instant messaging, web video and voice communications;
- SharePoint for document sharing and collaboration;
- Office Web Apps providing Word, Excel and PowerPoint online.

## Resource Lists using Talis Aspire

**Angela Laurins**

The Library is introducing Talis Aspire, a system for Course Organisers to create and manage online resource lists. A variety of resources can be added to a list, including, books, e-books, book chapters, journal articles and webpages.

Students can link directly to core texts and online resources, and items on a list are prioritised so students can easily see which items are essential reading. Course Organisers can also gather data on resource list use.

More information about Resource Lists (including a User Guide): <http://edin.ac/17q777a>

Search for Resource Lists: <http://resourcelists.ed.ac.uk>

If you are interested in using Talis Aspire please contact the IS Helpline: [is.helpline@ed.ac.uk](mailto:is.helpline@ed.ac.uk)

Project focus

## Enhancing the student experience – online

**Ailsa Wilson**



The University Website Programme team (UWP) is helping to deliver an outstanding student experience online in collaboration with colleagues across the Student Experience Project.

UWP is working closely with teams dedicated to improving the student experience throughout the student lifecycle to enhance key information and support services provision across the University website.

Developments so far include delivery of a new 'Enhancing the student experience' corporate website giving staff information about the range of student experience activities taking place around the University and a new 'Preparing for study' section providing academic pre-arrival support to help new students with the transition to university life.

Further work is planned to provide an online presence for the Student Information Point team, consolidate web content to support Student Surveys and refresh the New Students website.

Using user experience tools and techniques, UWP is helping the student experience teams gain a clearer insight into their audiences, the decisions which drive their behaviour and find ways to optimise their content.

[www.ed.ac.uk/student-experience](http://www.ed.ac.uk/student-experience)

## MANTRA refreshed

**Robin Rice**



The University Data Library is pleased to announce that Research Data MANTRA, the free online course designed for researchers or others planning to manage digital data as part of the research process, has been refreshed.

Shortlisted recently as one of 15 good practice examples designed to enhance information literacy skills\* MANTRA has been upgraded to Version 2 of Xerte Online Toolkits, the e-learning development environment used to create the MANTRA learning materials.

[datalib.edina.ac.uk/mantra/](http://datalib.edina.ac.uk/mantra/)

\*<http://datablog.is.ed.ac.uk/2013/06/26/mantra-shortlisted>

## Ordnance Survey County Series – historic metadata

**Sandy Buchanan**

In partnership with EDINA, the National Library of Scotland (NLS) has completed a project to list all their Ordnance Survey six-inch and 25-inch to the mile County Series maps of England and Wales – totalling 152,332 records.

The County Series records have been linked to sheet boundary extents to create clickable graphic indexes, and included with County Series and National Grid sheet records for Scotland, which were listed some years ago.

<http://maps.nls.uk/geo/records/>

<http://edin.ac/1aMI7pX>



## Libraries

### Darwin Learning and Teaching Cluster

Over the Summer, the former Darwin Library upper floor has been redeveloped to provide an attractive social and study environment. This complements other spaces at The King's Buildings: the Noreen and Kenneth Murray Library; the KB Centre and the JCM Learning and Teaching Cluster.

The Darwin Learning and Teaching Cluster provides:

- reconfigurable study space with a mix of furniture
- computing, printing, copying and scanning facilities
- quiet study space
- study carrels
- five bookable group study rooms
- one bookable accessible study room.

There is also a new catering facility, the Darwin Café, providing drinks and light snacks (open Monday to Friday, 9.30am - 4.30pm).

The Darwin Learning and Teaching Cluster is open from Monday to Friday, 9.00am – 5.00pm.

### Library blog

As well as highlighting project work, collections and exhibitions, the Library blog publicises new acquisitions, e-resource trials and other library-related activities.

The Library blog uses Wordpress and is populated by posts from other library blogs on the platform: this includes The AnneXe Factor (from the Library Annexe), the DIU (Digital Imaging Unit) blog, University Archives and project blogs (such as Godfrey Thomson). Existing library blogs, on other platforms, such as, Lothian Health Services Archive and Library Matters, are available via the blogroll.

<http://libraryblogs.is.ed.ac.uk>

### Journal Hosting

Supported by the Library's Journal Hosting Service, Res Medica, the Journal of the Royal Medical Society published its first online issue in September.

Res Medica was founded in 1957 with the purpose of promoting academic research amongst medical students at Edinburgh. The Digital Imaging Unit has scanned all back issues of the journal and, over the next few months, they will be made available online from the archives section of Res Medica. Full issues have been scanned and all pages have been OCR'd to make them searchable.

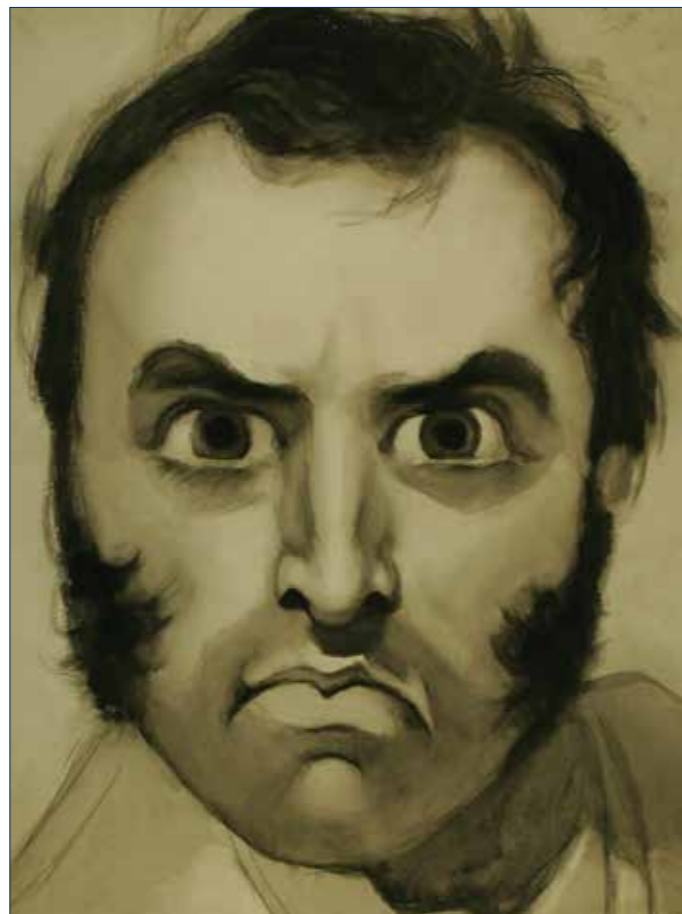
The back issues offer a fascinating insight not only into medicine of the time, but also into the history of the Society and the University.

Res Medica: <http://journals.ed.ac.uk/resmedica>

Journal Hosting Service: <http://journals.ed.ac.uk>

## CRC loans illustrate art in the asylum

Ruth Honeybone & Dr Joseph Marshall



We have recently loaned 12 important and rarely-seen art works: 11 items from Special Collections and 1 item from Lothian Health Services Archive (LHSA). All examples of art were created in the asylum.

The Special Collections items, from our Laycock Collection, were created by William Bartholomew at the Crichton Royal Hospital in the 1830s, while LHSA's was produced by John Willis Mason in the Royal Edinburgh Hospital. They are some of the earliest examples of art created within an asylum and were collected by asylum Physician Superintendents. These striking portraits depict patients with labels to categorise their particular condition as understood at the time, e.g. "Mania" or "Melancholia". They have just gone on exhibition loan to the Djanogly Art Gallery at the University of Nottingham. A subsequent loan of 10 drawings by another patient of the Crichton, Andrew Kennedy, to Halle Saint Pierre in Paris for an exhibition of 'outsider art' called 'Raw Vision' further demonstrates the appeal of this type of material.

[www.lakesidearts.org.uk/Exhibitions.html](http://www.lakesidearts.org.uk/Exhibitions.html)

Follow the Centre for Research Collections on Facebook: [www.facebook.com/crc.edinburgh](https://www.facebook.com/crc.edinburgh)

## Reclassification project concludes at ECA Library

Jane Furness

The project to reclassify 60,000 books at Edinburgh College of Art (ECA) Library has finished on time and on budget, thanks to the hard work of everyone involved from teams across User Service Division and Library and University Collections. The successful completion of the project concludes the final part of the merger of the ECA Library with the University Library.

Funded by the Scottish Funding Council, the reclassification project was undertaken in two phases. Firstly the ECA Library's Voyager catalogue data was processed externally by the US company, Backstage Library Works, to reclassify the general collection from Universal Decimal Classification to Library of Congress (LC), which is used widely across our other Libraries. Following this, the physical collections were relabelled and reshelfed in their new LC sequence in the ECA Library in Evolution House.

The reorganised ECA Library collection was ready for library users arriving at the start of the academic year. With the ECA collections now sharing the same classification scheme as the Main Library and other site libraries, it is hoped that users will be able to find items more easily.

ECA Library blog: <http://sites.ace.ed.ac.uk/ecalibrary/>



## ECA Rare Books Collection catalogued

Jane Furness & Dr Joseph Marshall

The Edinburgh College of Art (ECA) Rare Books Collection of around 1,500 items is now fully catalogued, including some outstanding items on the history of architecture and art and design.

Parts of the collection date back to the eighteenth century when the Trustees Drawing Academy of Edinburgh was established by the Board of Trustees for Fisheries, Manufactures and Improvements in Scotland in 1760. The Trustees Drawing Academy of Edinburgh later became the Edinburgh College of Art in 1907.

Many books in the collection were used for practical teaching purposes and in some cases there is evidence, such as paint splatters, but overall the condition of the items - particularly the rarer volumes such as the sets of Piranesi's works - is good. Of particular importance are the hand-painted Edinburgh shawl designs and the volumes of textile samples, such as calico samples.

Staff in the Centre for Research Collections welcome individual researchers and student groups to view the ECA collections, and can tailor selections of materials to specific class interests.

Find the items in the catalogue (shelfmarks starting at 'RECA'): <http://catalogue.lib.ed.ac.uk/>

ECA Rare Books Collection: <http://edin.ac/16pSlig>





**Staff spotlight:**  
**Andrew McFarlane**

**IT Service Manager Andrew McFarlane manages the 'Reporting + Analytics' service, and assists with the UniDesk service support tool.**

Andrew was born with congenital cataracts in both eyes. Childhood glaucoma destroyed the sight in his left eye and pain from that condition meant he was recently given a prosthetic eye. He has good vision in his right eye, despite suffering a retinal detachment in 2009.

Andrew studied at the University of Aberdeen and worked abroad as an English teacher. He then did a Theology PhD at the University of Edinburgh when he also got a job helping students with their computer problems.

"Computers have always been a big part of my life," he explained. "My dad ran a computer club for people with sight problems back in the 1980s that I went to; and I've always liked programming and playing computer games. So when an IT job appeared here helping students, it seemed a natural fit."

He admits he was nervous when he first started. "I was worried about people's attitudes to disability, and particularly about whether they'd be impatient with my level of sight or with the fact that I might

take longer to do some tasks when my eyes were sore."

Through the Access to Work scheme, the University has provided tools to help him do the job, such as a scanner and Zoomtext which digitise and enlarge text. His desk is by the window so he gets more natural light, helping to avoid the neon lights and eye-strain.

"But just as importantly, colleagues have continually shown care and flexibility," said Andrew. "My approach is to be very upfront with them regarding my sight problems – I don't think it's fair to expect them to guess what I need!

"I work with an extremely supportive team here in IS Applications Service Management. Any problems are resolved by clear communication. Quite funnily, some of my colleagues weren't even aware I had a visual impairment at first."

Recent team achievements of which he is proud are the successful roll-out of a new version of UniDesk to the University and several partner institutions. He has also worked hard to build good collaborative relationships with users of the Business Objects reporting and analytics tool, and is currently engaged in a project to upgrade it.

Andrew believes employers who assume they couldn't possibly take on someone with sight loss are missing out on potentially crucial assets for their business.

"It needs said time and time again, visual impairment in itself is no indicator of intelligence, competence or motivation. What Edinburgh University seems to appreciate is that an individual who is challenged by sight problems need not be a challenge to work with and support. In fact, we are just as capable as the next person of coping with work pressures and of making a valuable contribution."

**Disability computing support** for staff

Information Services offers a service to support all disabled University staff in the workplace.

The service helps identify assistive software, hardware or standard IT solutions which may be of assistance. There is also a small pool of equipment which can be borrowed by staff to trial.

To access the service please contact the IS Helpline:

**is.helpline@ed.ac.uk** or call 0131 651 5151.



**Putting on the show right here!**

**Lucy Janes**

Edinburgh was busier than ever this summer and the University was no exception.

University buildings and grounds are used as venues for some of the biggest shows of the festivals making us the largest single landlord on the Fringe.

**In total this year there were 1,253,021 tickets sold/visitors recorded for performances in University buildings over the summer festivals period.**

But providing a home for the shows is only one aspect of the University's involvement, as a new website published for the first time this year explained.

The University is an official partner of the Edinburgh International Book Festival and the Edinburgh International Festival.

The University at the Festivals website highlighted how many events at these festivals and the Fringe were led or organised by University staff. In video interviews, participants and festival organisers talk about the synergy between the University's mission to spread knowledge and the festivals' capacity for reaching audiences.

The website had approximately 1700 visitors in a month from its launch in late July, with 70% of visitors coming from the Edinburgh area.

[www.ed.ac.uk/news/events/festivals](http://www.ed.ac.uk/news/events/festivals)

[www.ed.ac.uk/news/2013/university-at-the-festival-310713](http://www.ed.ac.uk/news/2013/university-at-the-festival-310713)



**Fringe debut** for Edinburgh academics

**Dr Dan Ridley-Ellis & Nicola Osborne**

The 'Bright Club: Scotland's Fringe' run saw nearly 90 academics from 10 Bright Clubs across the UK engaging an audience of more than 1,000 in their research through stand-up comedy. It was an intense month for all involved but paid off with respectable reviews, great ticket sales and, most importantly, abundant laughter.

The University of Edinburgh was well represented with 17 academics, researchers, students and recent graduates making jokes about their work from Chemistry, Biological Sciences, Physics, Engineering, Languages and Linguistics, Psychology, Psychiatry and Neuroscience, Education and Veterinary Science.

Find out more about Bright Club Edinburgh, which runs regularly at The Stand and is always eager to recruit performers, here:

<http://brightclubedinburgh.blogspot.co.uk/>

**Cabaret causes a stir**

**Sarah Anderson**

EDINA was a Fringe pioneer this summer, being one of the first shows to appear in the Cabaret of Dangerous Ideas.

Part of the Assembly Rooms Fringe, the Cabaret gave great minds – including more than 20 University staff – a chance to challenge common assumptions. Speakers addressed the full circle of life, proposing we have theatre for foetuses while embracing the idea of our own death.

The Cabaret, which attracted more than 400 audience members for the 14 University of Edinburgh-related shows, was curated by the Beltane Public Engagement Network and Fair Play Productions.

<http://bit.ly/13KANOT>



**EDINA was a Fringe pioneer this summer**





## Social media

Nicola Osborne, Social Media Officer, looks at what is happening in the social media space

### Social and cloud based learning and teaching

Susie Greig

Many staff at the University have started to use online social tools, such as Twitter and Facebook, or cloud-based tools such as Google Drive or Dropbox, with some starting to use them for teaching activities. We are also aware that students increasingly use these types of tools to manage their studies.

In response to this interest Learning Services have launched a new service to support staff and students in using social and cloud based tools in their learning and teaching activities. The service will offer advice and guidance (supported by a Working Group of University experts) through self-help web materials and through IS Helpline contact.

The service will not support specific products, but will be able to help share experience relating to tools in this fast-moving area. We will develop the offering in response to questions and requests from staff and students, so if you are interested in these tools in your teaching and/or learning activities and you already have burning questions, please contact us. Equally if you are already using these types of tools in your learning and teaching, and would be willing to share your experiences, we would also love to hear from you.

<http://edin.ac/186XpcZ>

For enquiries please contact: [is.helpline@ed.ac.uk](mailto:is.helpline@ed.ac.uk)

### Facebook and LinkedIn update policies

Nicola Osborne

Facebook has recently made changes to their governance documents and policies, largely around the use of personal data, particularly in relation to commercial content. LinkedIn have also changed their User Agreement and Privacy Policy including measures to accommodate the newly launched 'University Pages', and the expansion of the site to younger users.

Read more:

- Facebook proposed updates <http://on.fb.me/18Fx3KG>
- LinkedIn's Terms of Service updates <http://linkd.in/1ap1SY3>

### Engaging the scientists and engineers of the future

Kathryn Hood

The College of Science and Engineering Recruitment and Admissions team have seen that social media can be a key point of first contact for prospective students, cultivating Twitter and Facebook presences and sharing application dates, information, and updates from related organisations.

The team also tweet live from open days, informing attendees of practical arrangements, talks, and answering questions. Engaging prospective students this way helps maintain a valuable dialogue and help convert them from "just looking" to actively applying and accepting their offers.

Follow their ongoing progress:  
[www.facebook.com/sciengra](http://www.facebook.com/sciengra)

## Conferences

### Repository Fringe 2013

### Fringe attracts repository aficionados to Edinburgh

Nicola Osborne



Repository Fringe 2013, an annual 'unconference' looking at all aspects of repositories, took place at the Informatics Forum, from 31st July to 2nd August. The Fringe is organised by EDINA, the University of Edinburgh and the Digital Curation Centre with this year's event, the sixth, marking a refresh after running as a strand at Open Repositories 2012.

The organising team were delighted to see many new faces amongst more than 90 participants representing diverse interests and including repository managers and developers, as well as those working in support, preservation, open access, impact, teaching, and research.



Mark Hahnel, founder of FigShare, provided a closing keynote that reflected on his own recent activity but also looking ahead to the changing shape of repositories and their role in research:

**Next year repositories will look very different. RDM (Research Data Management) plans say they have to. Funders say they have to.**

Jacqui Taylor, who has been working with the UK Cabinet Office to make their data more open, provided the opening keynote, focusing on the importance of open data. She kicked off a programme drawn from participant ideas and contributions including presentations from Pecha Kuchas, and round table discussions. A Developer Challenge also took place in parallel with the winner, Russell Boyat, exploring an idea to preserve MOOCs.

The Repository Fringe community is always up for playful experiments and our extended networking session saw one participant hand out free lollies, and another bake fortune cookies with her contact details inside. The

event also featured a presentation in the medium of song, and our artist-in-residence, Scott Renton (Library and University Collections), sketching his notes of the event.

Liveblog posts and videos from each session, and images from the event can be found via the website: <http://repositoryfringe.org/>

If you would be interested in participating in or helping to organise Repository Fringe 2014 please email: [repofringe@gmail.com](mailto:repofringe@gmail.com)

### IT Futures Conference:

The impact of disruptive technology on higher education

Fiona Littleton

December 2013 will see the highly anticipated return of the IT Futures conference. This year's conference will feature high-profile guest speakers and also key thinkers from within the University, all debating the potential for technology to fundamentally disrupt the very idea of what a university is about.

Keynote speakers are confirmed as Aleks Krotoski (BBC Radio 4 and Guardian columnist) and Cory Doctorow (Sci-Fi author).

We hope you can join us. The conference will be held on Thursday 12th December in the Informatics Forum. Registration will be required and we are confident that the conference will be a "sell out".

For more details of the conference (and booking links) please visit:

[www.itfutures.ed.ac.uk](http://www.itfutures.ed.ac.uk)



## Begin running with chocolate buttons

James Jarvis & Susan Watson



The IS Healthy Working Lives Group has been running a series of taster sessions designed to introduce different activities to IS staff. The latest 'Begin Running with Chocolate Buttons' gave a gentle introduction to the idea of running - with chocolate buttons at the finish line as an incentive to come along!

James Jarvis led the session and offered advice on why you might want to run, how to get properly kitted out, good running technique and also demonstrated some exercises to warm up and warm down to avoid injury. Laura Gould, Lisa McDonald and Alex Stuart all braved the Edinburgh weather in what proved to be an informative and fun lunchtime session in the Meadows.

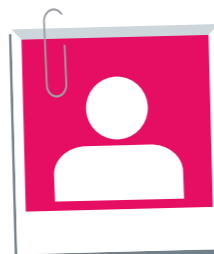


Lisa McDonald

**I've been running for a few years but I'd never been shown how to warm up properly. Thanks to you I've now got the tools to make sure I don't do myself an injury (even if the techniques did make us look like we'd joined the Ministry for Silly Walks!) Thanks James!**

### Would you like to run a taster session for IS staff?

Contact Viki Galt: [Viki.Galt@ed.ac.uk](mailto:Viki.Galt@ed.ac.uk)



## Secret lives of IS Staff

Staff in Information Services have lots of hidden talents... can you guess who lead the following 'secret lives'?



### An orchestral musician with a private pilot's licence

"My life revolves around constantly learning and enjoying challenges, both mentally and physically, so working at the University is an incredible place to be. I am lucky to have played professionally as an orchestral musician (and still perform), to have attained a Wine & Spirits Education Trust Diploma, and to have once achieved a private pilot's licence. When I was growing up I loved white water kayaking, but the climate in Scotland has lead me to pursue squash, cycling and running to keep fit and stay warm."

### An IT professional who has fought for her country



"At work I help people get to grips with IT. At play things get more physical. I've been sliding down mountains every winter for 30 years now. And, although I'm no Jade Jones, I have fought for my country (even if it was the Kelvin Hall and not an Olympic stadium!), and I still keep in practice."



### A commander who lives for the weekend

"Driving to a 'hostile' location to provide communications to all commanders, allowing them to make accurate and timely decisions on when to move logistical assets to new locations. Looking after a team of operators, some more experienced than others, ensuring they are in the right place at the right time. All whilst under the threat of a 'contact'. Just a weekend's work for Step-Up and Force Protection Commanders."

All will be revealed in the next edition of **BITS**.

If you have a secret life you would like to share, email your teaser (maximum 80 words) to [BITS@ed.ac.uk](mailto:BITS@ed.ac.uk)



## 60 seconds with: Kerry Miller

Research Data Management Service Co-ordinator



**This new role will be going from talking the talk to walking the walk; I've got to actually do what I've been telling people at other institutions to do!**

**Kerry Miller, originally from Falkirk, studied Genetics & Immunology at Aberdeen and went on to a postgraduate diploma in Library & Information Studies at Strathclyde. She takes up a post as Research Data Management (RDM) Service Co-ordinator in December 2013.**

### What's your background?

I've done research for various organisations, in industry and charity sectors - including what is now GlaxoSmithKline and Cancer Research UK as well as the Ministry of Defence and the British Council. I then joined the Digital Curation Centre (DCC) in 2011 as an Institutional Support Officer. This involved working with Higher Education institutions across the UK to help them improve their Research Data Management policy and practice, in response to Research Councils UK and other similar requirements.

### Tell us about the new position.

My new post, RDM Service Co-ordinator, is a newly-created post, aiming to bring together and co-ordinate all the different aspects of the research data management work that's currently being done throughout the University: lots of infrastructure improvements, and new tools and support for researchers. There are things like Datashare, which has been active for a while now, but which we're promoting, so more researchers are aware of it and know when to use it. There are also a few more services that are still in the design phases. You can read all about the RDM work that is going on via the RDM Blog: [datablog.is.ed.ac.uk](http://datablog.is.ed.ac.uk)

### What particularly excites you about the new role?

The work we do at the DCC is in many ways quite theoretical; we go out and talk to institutions about what they ought to be doing, what they need to do to meet requirements, and that sort of thing, but this new role will be going from talking the talk to walking the walk; I've got to actually do what I've been telling people at other institutions to do! It's quite scary but also quite exciting; just to see whether or not I can actually turn that into a real, successful service.

### Where exactly will you be based?

I'm based within IS, within the Research Data Management team, on the lower ground floor of the Main Library. There is a huge number of people involved in the area, but the RDM team itself is small and there aren't that many people full-time at the moment. RDM is part of a lot of people's jobs - people like Stuart Lewis and John Scally from the library side, Tony Weir in IT Infrastructure and Robin Rice in the Data Library, but I'll be one of the few people for whom it's a full-time, dedicated role.

### What do you enjoy doing outside work?

I watch a lot of films, and do a lot of cooking and baking. I've been doing a recipe a week from The Great British Bake Off, with greater or lesser success. I often use my office colleagues as a waste disposal system!



## Adding analytics to the University portal

University web portals can often be black holes when seeking useful information about user activity. In this lunchtime seminar, run by IS Applications Division, attendees will be asked to imagine adding their dream analytics solution to their portal and will then be shown how these desired capabilities can be implemented in a practical solution.

If you would like to attend

**'From Black Hole to Gold Mine: Adding Analytics to the University Portal'**  
on **Wednesday 27 November**, please book a place on MyEd.

Keep your eyes peeled for announcements of topics for future lunchtime seminars.

## New Writing for the Web course

The ever-popular Writing for the Web course has been given a major update. Dates are now open for booking through the academic year.

We've updated our examples, brought in new research and reading references, and introduced more activities.

If you want to learn how to communicate more effectively online in web pages, emails, help text and more, book a place on MyEd.